

The EDGE Biographies 2011-2012 Season



KEN BALLENGER – Ken has been performing in the Seattle area for over twenty years. You may have seen him on stage, in commercials, and if you were alert at a few low budget movies, you may have spotted him. He is one of the founding members of The EDGE. In addition to performing he teaches workshops, practices karate, carves things with a chain saw, and makes a living as an

insurance broker.



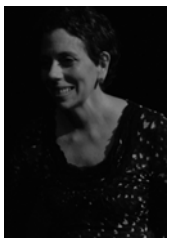
FRANK BUXTON – Frank has spent all of his life in the entertainment business in one way or another, next year celebrating his 60th year (!) of gainful employment in show biz. He has produced, written, and directed many television series and has appeared in feature films, TV series and movies. He just completed a teeny tiny role in the feature film *Grassroots*, with Jason Biggs, which

should be out some day. Here at BPA he's been in *Noises Off*, *Our Town*, *Music Man*, *My Fair Lady*, *You Can't Take It With You*, *The Man Who Came To Dinner*, *Inspecting Carol*, *As You Like It*, and *Macbeth*. He's a fun guy, but tired.



JOHN ELLIS – John is very happy to be back for what we think is the 16th season of monthly Improv at Bainbridge Performing Arts. Thanks so much to all our wonderful audiences and their terrific support all these years. Besides Improv, he has appeared on this stage in *Noises Off*, *Annie*, *Born Yesterday*, *Guys and Dolls*, *A Midsummer Night's Dream*, *As You Like It*, 'Art' and most recently in

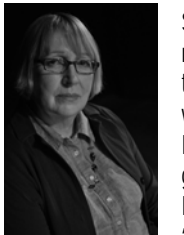
Sylvia. He has been acting since grade school. He's the co-author (with Andrew Shields) of *Harry Tracy* which was produced here at BPA to great acclaim some time ago...here we go again!!



CYNTHIA LAIR – Cynthia has worked as an actress in commercials, film, radio, and stage in New York and in Seattle since it was cool for guys to wear gold chains. She has a double life as an assistant professor at Bastyr University and as the author of *Feeding the Whole Family*, third edition published in 2008. Go to her website

www.CookusInterruptus.com for super-good recipes

demonstrated in over 160 short videos. Improvised antics emerge from her online "family," Bhama Roget, Matt Smith, and Frank Buxton. Off line she cooks for her beautiful daughter Grace and kind husband Michael.



SUSAN MACPHERSON – Susan is a long time member of *The EDGE* and has been improvising in the Northwest for more years than she'd like to admit with such groups as TheatreSports, Unexpected Productions, and Seattle Improv. She has been a guest player with None of the Above and Spolin Players. She had her one and only movie role as "The Librarian" in the feature film *DareDreamer*. In

her spare time she is a certified Postpartum Doula. She's the proud mother of her daughter Carson, now a college woman, by golly. She is not sure whether she lives to improvise or improvises to live!



BHAMA ROGET – Bhama transplanted to Seattle from Texas in 1997 and has been performing with *The EDGE* for close to eight glorious years. She has been in productions at The Empty Space, Seattle Children's Theatre, Seattle Repertory Theatre, The Fifth Avenue, and California Shakespeare Theatre. Bhama plays Cynthia Lair's daughter on Cynthia's website,

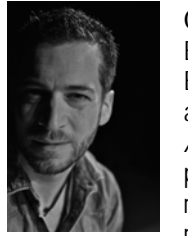
www.cookusinterruptus.com. She can also be heard on various local radio spots and appears on the occasional bus ad.



ANDREW SHIELDS – Andrew Shields has performed everywhere from his mother's living room to Carnegie Hall. An award-winning composer, he has a degree in Music from Stanford, and wrote the music, lyrics, and script for the original *Reefer Madness: The Musical*, as well as music, lyrics, and (with fellow EDGE member John Ellis) script for the musical *Harry*

Tracy: A Bainbridge Bandit. He has music-directed shows at ACT, Tacoma Actors' Guild, the Bathhouse Theater, Second Story Repertory, and Bainbridge Performing Arts, among others, and played "Harold Hill" in a production of *The Music Man* at BPA. He has performed with Seattle Opera and the Seattle Symphony Chorale, and currently sings and plays keyboards with the rock band, The Shrinking Heads.

MATT SMITH – Matt is a teacher and practitioner of the grand old art of Improv, having taught and practiced all over the Northwest. He's an auctioneer, an actor, and a major player in our Improv world. His latest solo show, *All My Children* is touring now to sold-out houses. Screen credits include *Outsourced*, *Sleepless in Seattle*, and *The Immaculate Conception of Little Dizzle*. He always lends an air of reality and truth, not to mention comedy, to our humble offerings.



CHRIS SOLDEVILLA – Chris has done Improv in Boston, L.A. and now performs and teaches it on Bainbridge and in Seattle. Among his TV/movie appearances are *Coyote Ugly*, *7th Heaven*, and *Arl\$\$.* He recently played McMurphy in BPA's production of *One Flew Over the Cuckoo's Nest*, but received his best reviews when he played the title role in *The Revolt of the Foolish Molar* in Mrs.

Gladney's 3rd grade class, where he learned the importance of dental hygiene.



MATTY WHITMAN A Seattle native, Matty has been performing here for over 20 years at such venues as Annex Theatre (*The Women*), Alice B Theatre (*The Holiday Survival Game Show*), and Rebar! (*Dina Martina*, *Pirates of Lesbos*, *Deflowered in the Attic*). He's been with The EDGE since the year one, and offers up the most outlandish characters and situations to our proceedings. Matty is also a voice-

over talent and has worked closely with SandLot games for many years doing character voices for video games. Most recently he has worked as the voice for the Samsung Galaxy Tab 7.0 Plus on T-Mobile's website.