

43rd Annual Season
2015 – 2016

BAINBRIDGE
SYMPHONY ORCHESTRA
WESLEY SCHULZ, MUSIC DIRECTOR AND CONDUCTOR

presents

Movie Music LIVE!

featuring

Brittany Boulding, violin

Bainbridge Island Youth Orchestra * (Sunday Only)

Friday, April 15, 2016, 7:30 p.m.

Saturday, April 16, 2016, 7:30 p.m.

* Sunday, April 17, 2016, 3:00 p.m.

Bainbridge Performing Arts
200 Madison Avenue North, Bainbridge Island



THE PROGRAM

Suite from Star WarsJohn Williams/arr. Smith

James Horner: Hollywood Blockbusters arr. Moss

How to Train Your Dragon John Powell/arr. O’Loughlin

Three Pieces from Schindler’s List John Williams

Theme from Schindler’s List

Jewish Town (Krakow Ghetto – Winter ’41)

Remembrances

Brittany Boulding, violin

...intermission...

Music from Spider-Man Danny Elfman/arr. Wasson

Suite from Video Games Live!..... arr. Ford

Pirates of the Caribbean..... Klaus Badelt/arr. Ricketts

South Pacific Symphonic Scenario..... Richard Rogers/arr. Bennett

PROGRAM NOTES

by Wesley Schulz

In the late nineteenth century when film was first invented, there was no sound. “Silent movies” was the term for motion pictures without audible dialogue or music. Some enterprising theater owners, however, would hire a pianist, organist, or even a full orchestra to play music that fit with these silent films. Film companies would even send a list of suggested pieces to be performed live along with film screenings. In the 1920s, though, this changed when technology evolved to include sound with film resulting in “talking pictures” or “talkies.” The art and industry of film-making was born.

One of the great aspects of an orchestra is the chameleon role it plays in making music. One night an orchestra might be performing the glorious symphonies of Mozart, Brahms, or Stravinsky, and another, providing the music for an opera, ballet, moving picture, or musical revue. Music fuses with other artistic genres to create unique experiences for audiences. Imagine what it would be like to watch films like Jaws, Ben Hur, or Star Wars without music. How many moments can we think of in which the music is central to the emotion or event taking place on the screen or stage? Would Jaws be the same without that ominous half-step created by the low strings?

Tonight you will hear some of the best music made for film including Star Wars, How to Train Your Dragon, Pirates of the Caribbean, Braveheart, and more. Brittany Boulding of the Seattle Symphony Orchestra will also join us to perform John William’s Three Pieces for Violin and Orchestra from Steven Spielberg’s Schindler’s List. To round out the evening we will also give a special performance of music from video games and a suite from the Pulitzer Prize winning musical South Pacific (which is also famous for its 1958 film version starring Rossano Brazzi and Mitzi Gaynor). So sit back and relax as we dim the lights and bring the best of music for the stage and screen right to your ears.

BAINBRIDGE SYMPHONY ORCHESTRA

Wesley Schulz, Music Director & Conductor

Podium sponsored by *George & Margaret Sterling* and *Bainbridge Community Broadcasting*

FIRST VIOLIN

Pat Strange, Concertmaster

Sean Parker Architects

Justine Jeanotte

Katherine Davies

Alan Francescutti

Larry Telles

Pete Wiggins

SECOND VIOLIN

George Sale, principal

Kathie Peron-Matthews

Kathie Peron-Matthews

Judy Anderson

Vallery Durling

Kathleen LaBelle

Dan Brown

Kathie Peron-Matthews

Clara Hanson

Kathie Peron-Matthews

Tom Monk

Kathie Peron-Matthews

DeeAnn Sisley

Mary Lou Knox

Kathie Peron-Matthews

VIOLA

Jenny Weaver, principal

John Knox & DeeAnn Sisley

Dorothy Foster

Kathy Connelly

Virginia Richter

Andrew Schirmer

CELLO

Barbara Deppe, co-principal

Rick & Sharon Sheppard

Priscilla Jones, co-principal

Rob Carson

Arlayne Eseman

Pam Harlan

Max Aussendorf

Lind Carr, in recognition
of David Durfee

BASS

Janet Elias, principal

Lew & Nancy Mandell

Jon Brenner

FLUTE

Lisa Hirayama, principal

Kenneth Sins & Betty Hoffmann-Sins

Jared LeClerc, interim principal

Danielle Knight, 2nd flute/piccolo

OBOE

Amy Duerr-Day, principal

Christopher & Cameron Snow

Alicia Hall

William Bryant, English Horn

CLARINET

Patricia Beasley, principal

Susan Anderson

Howie O'Brien, 2nd

Jeni Bryant, bass clarinet

BASSOON

Jamael Smith, principal

Grant & Barbara Winther

Lucas Zeiter

FRENCH HORN

Matt Anderson, principal

Kelly Brown

Amy Orr

Kestrel Wright

TRUMPET

Chris Thomas, principal

Dr. Stephen Hubbard

Craig Mohr

Kevin Slota

TROMBONE

Daniel Foreman, principal

Bud Parker, 2nd

Richard Heine, bass trombone

Larry & Omie Kerr

Nick Bischoff, guest bass trombone

TUBA

Jas Linford, principal

TIMPANI

Susan Tolley, principal

Alex & Meredith Mirkow

PERCUSSION

Art Whitson, principal

Jack Lake

Malcolm West

Meg Tolley

Alex & Meredith Mirkow

HARP

Jennifer Burlingame, principal

PIANO/CELESTA

Mary Foster Grant

In memory of Esther Frost

GUEST ARTISTS

Brittany Boulding

George & Margaret Sterling

Virginia Davison

GENERAL MANAGER

Clara Hanson

STAGE MANAGER

Jon Brenner

LIBRARIANS

Kathie Peron-Matthews

DeeAnn Sisley

* BSO Chair Sponsors are denoted by italics in the BSO membership roster.

THE BSO CHAIR SOCIETY

Formed in 2015, the BSO Chair Society lends vital support to the Bainbridge Symphony Orchestra through named sponsorships, honoring the tremendous gifts of talent and time that these volunteer musicians contribute to this thriving organization.

BAINBRIDGE ISLAND YOUTH ORCHESTRA

Tigran Arakelyan,
Music Director & Conductor

FIRST VIOLIN

Sarah Lucioni

Sophia Doane

Max Doane

Nira Peters

Ashley Swindle

SECOND VIOLIN

Cora Cole

Jacqueline Hall

Lula Piper

Marina Correa

Arlea Prater

VIOLA

Kalea Chu

Josie Meier

CELLO

Daniel Stein

Vega Piper

WESLEY SCHULZ, MUSIC DIRECTOR



Conductor **Wesley Schulz** made his Seattle Symphony Orchestra debut in a sold-out performance with singer/songwriter Gregory Alan Isakov in February 2015. As the 2014-2015 Conducting Fellow Schulz served as cover conductor for Maestro Ludovic Morlot, led seven world premieres at the Merriman

Family Young Composers Workshop and assisted with recordings for the symphony's Grammy-winning label, Seattle Symphony Media. A leader of educational and family concerts, Schulz makes frequent appearances with the Austin Symphony Orchestra conducting their Halloween Family Concert as well as their Young People's Concerts; the latter reaching over 30,000 Texas students. In addition to serving as Music Director and Conductor of Bainbridge Symphony Orchestra Schulz is Director of Orchestras at University of Puget Sound and Music Director of Seattle Festival Orchestra. Upcoming and recent conducting engagements include the Port Angeles Symphony, Auburn Symphony, Grand Junction Symphony Orchestra and the Juneau Symphony.

BRITTANY BOULDING, VIOLIN

A Pacific Northwest native, violinist Brittany Boulding has performed regularly with the Seattle Opera and Seattle Symphony, where she is now a new member. She has been Concertmaster of the Northwest Sinfonietta and the Auburn Symphony as well as Associate Concertmaster of the Pacific Northwest Ballet. Boulding earned her Bachelor of Music from Rice University and her Professional Studies Certificate from the Colburn Conservatory under the tutelage of Robert Lipsett. Boulding has appeared as soloist with the Auburn Symphony, Cascade Symphony, National Repertory Orchestra, New Haven Symphony Orchestra, Orquesta de Camara Concierto Sur (Cuba) and Spoleto USA.

BAINBRIDGE ISLAND YOUTH ORCHESTRA (BIYO)

The Bainbridge Island Youth Orchestra provides orchestral experience and quality musical education while fostering teamwork and collaboration and nurturing self-confidence, respect for the process, and musical excellence. Formed in 2001, BIYO is the premier organization for young musicians in North Kitsap County. BIYO provides students with the opportunity to perform orchestral music at a high degree of artistry while providing opportunities for performance and community involvement. BIYO

currently offers two tiered string orchestras for musicians ages 7-18 playing violin, viola, cello, and double bass.

OUR SUPPORTERS

Bainbridge Symphony Orchestra extends heartfelt gratitude to Community Sponsor **San Carlos Restaurant**, as well as **Fletcher Bay Foundation** for funding music acquisition for the season, and **Wicklund Dental** for funding the "Youth in Music Initiative." BSO is especially grateful to the members of the **BSO Chair Society** and is enduringly grateful to those who have dedicated their time, energy, funds, and audience support to this volunteer organization.

We are also grateful to Bainbridge Performing Art's 2015 – 2016 Season Sponsors & Supporters **Bainbridge Island Ace Hardware**, **Bainbridge Island Magazine**, and **Town & Country Market**. BPA is supported, in part, by the **Bainbridge Community Foundation**, and **One Call for All**. Bainbridge Performing Arts is pleased to offer an "Open Doors" program. Free and reduced-cost tickets are available for most programs to community members in need through our partner Helpline House thanks to grants from the **Mabee Family** and **Bainbridge Community Foundations**, making the performing arts accessible to everyone!

The Bainbridge Orchestra was founded in 1972 by the late David Pence, when the Island's population was less than 13,000. Today, the Symphony serves a musically rich role in our community, uniting artists spanning generations and myriad talents who share their love of music and learn from each other. Thank you for joining us to listen and celebrate the orchestra's thriving contribution to the arts on Bainbridge Island this season!

**Winslow
Massage**

Barbara Deppe, LMP

- Gift certificates
- Discount packages

**Mention this ad
for 10% off your
first massage!**

**375 Grow Avenue
206-842-7062
www.winslowmassage.com**

Jas Linford's Brassworks

- Professional woodwind and brass instrument repair
- Music instruction: *specializing in brass*
- Musical instruments bought and sold
- Brass ensemble music arrangements
- Local reliable service



National Association of
Professional Band Instrument
Repair Technicians SM

(206) 842-2084
jaslinford@att.net

10539 N Madison
Bainbridge Island
WA 98110

BAINBRIDGE CHORALE

Earth Songs

Directed by Michael Austin Miller
Accompanist: Laura Milleson
Featuring the Olympic Girls' Choir

Saturday, April 23
7:00 pm
Sunday, April 24
3:00 pm

Rolling Bay Presbyterian Church
Bainbridge Island

Tickets/Info: www.bainbridgechorale.org
info@bainbridgechorale.org,
or 206-780-2467



Enjoy the Evening.

Congratulations to the
Bainbridge Symphony
Orchestra on its
2015-2016 Season

WESTSOUND
HOME & GARDEN
Living on the Kitsap Peninsula

wshg.net

Bainbridge Island Youth Orchestra

Music Director
Tigran Arakelyan

Spring Concert

Sunday, May 1 - 4:00 p.m.
Grace Church - 8595 NE Day Rd.

FREE ADMISSION

www.biyo.us

Thank you to our sponsors:

BPA CHAMBER SERIES

The Art of
FUGUE

Join us for a complete performance
of Johann Sebastian Bach's
Die Kunst der Fugue, BWV 1080.

April 24

Sunday at 3:00 p.m.

Tickets: 206.842.8569

bainbridgeperformingarts.org



200 MADISON AVENUE NORTH
www.bainbridgeperformingarts.org



BAINBRIDGE SYMPHONY ORCHESTRA

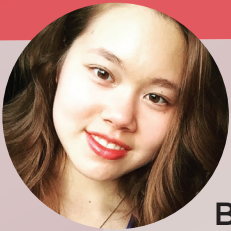
With Music Director & Conductor Wesley Schulz

presents

DVOŘÁK'S SYMPHONY No.8 IN G MAJOR

June 3 & 5

Friday at 7:30 p.m. & Sunday at 3:00 p.m.



THE PROGRAM

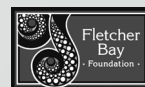
THEOFANIDIS: Dreamtime Ancestors, Washington premiere

BEETHOVEN: Piano Concerto No. 3 in C minor, op. 37, first movement

Featuring Leah Deobald, 2016 Young Artist Competition winner



200 MADISON AVENUE NORTH



Tickets: 206.842.8569

bainbridgeperformingarts.org



BPA CHAMBER SERIES

ATMOSPHERES & CARNIVALS

THE PROGRAM

ERIK SATIE: Gymnopedies 1-3* • LISZT: Nuages Gris* and
Die Trauergondel* • SAINT-SAËNS: Carnival of the Animals
(*New orchestrations)

June 12

Sunday at 3:00 p.m.

Tickets: 206.842.8569

bainbridgeperformingarts.org